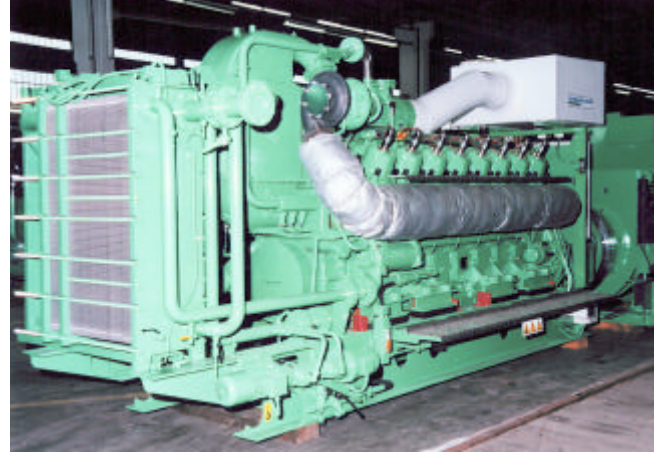


Case Study



Wight Salads Greenhouse CHP



Client	Capacity	Location	Operational
Wight Salads UK	36MW	Isle Of Wight, UK	May 1999

Manufacturer	Packager	Type	Primary fuel
GE Jenbacher	Clarke Energy Ltd, UK	18 x 2MWe JMS 616 GS-N.L	Natural Gas

SITE DESCRIPTION:

In what was the largest ever CHP order in the European horticultural industry Clarke Energy installed, in conjunction with Independent Energy, GE Jenbacher 616 Gas CHP Modules for a consortium of growers on the Isle Of Wight .

The project, which involves six nursery sites, has the capacity to generate a total of 36MW supplied by 18 type J616 GE Jenbacher gas engines, each of 2MW size. Custom-designed for constant duty base load operation, these compact engines do not require special foundations for installation and offer well-proven longevity in the horticultural environment.

The Wight Salads consortium comprises Arreton Valley Nursery Ltd, the largest independent tomato grower in the UK, Bridgeguild Ltd, which produces approximately 50% of the UK cherry tomato crop, and Macketts Land Nursery which concentrates on cucumber production.

As well as reducing the energy costs of these nurseries, the by-products of power generation, namely heat and carbon dioxide from exhaust gases, are used to increase the yields of the greenhouse produce. The surplus electricity from the installation is, meanwhile, sold to homes and businesses on the Isle of Wight, and 'exported' to the English market.



Authorised Distributor
GE Energy